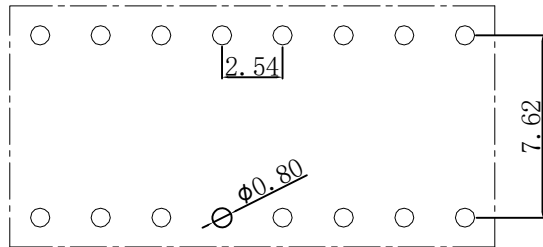
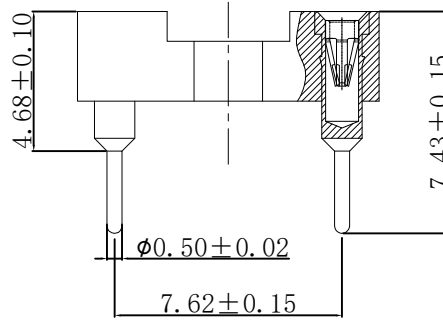
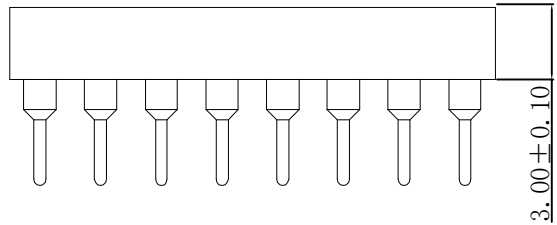
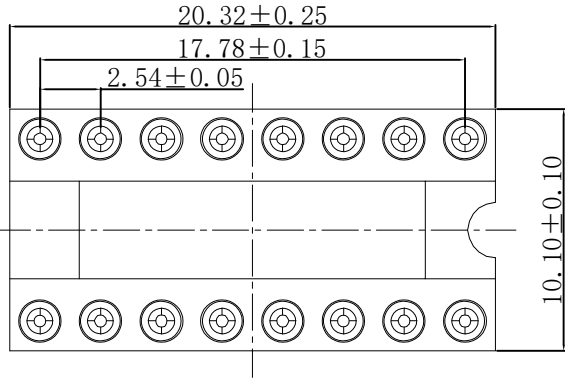


# RoHS

| REV | ECN NO. | DESCRIPTION | DESIGN | APPROVAL | DATE       |
|-----|---------|-------------|--------|----------|------------|
| A1  | NEW     | 更换图框        |        |          | 2023.11.25 |



P. C. B LAYOUT

**Technical Data**

**Material:**

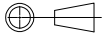
Contact Material: Copper Alloy  
Contact Plating: Au or Sn Over Ni  
Insulator Material: PBT/PPS UL94V-0

**Electrical:**

Rating current: 3Amps/contact max  
Rating voltage: 60V AC/DC  
Contact resistance: ≤4MΩ/contact  
Insulation resistance: ≥1000MΩ  
withstanding Voltage: 500V AC/minute

**Mechanical:**

Operating temperatures: Gold Plated: -55°C to +105°C  
Tin Plated: -40°C to +105°C  
Soldering temperature: +260°C MAX(PPS)  
+255°C MAX(PBT)

|                                                                                                                                                                |        |          |                |                             |       |                                                                                       |      |     |
|----------------------------------------------------------------------------------------------------------------------------------------------------------------|--------|----------|----------------|-----------------------------|-------|---------------------------------------------------------------------------------------|------|-----|
| X.±0.50                                                                                                                                                        | X.°±   | PART NO: |                | IC254V-12-16-0743           |       | <b>XFCN</b> 兴飞连接器                                                                     |      |     |
| .X±0.25                                                                                                                                                        | .X°±   | TITLE:   |                | 2.54mm IC Socket Connectors |       | 0769-82001899                                                                         |      |     |
| .XX±0.15                                                                                                                                                       | .XX°±  |          |                |                             |       | www.xfconn.com                                                                        |      |     |
| .XXX±0.10                                                                                                                                                      | .XXX°± | UNITS:   |                | mm                          |       | DWG NO:                                                                               |      |     |
| THESE DRAWINGS AND SPECIFICATIONS ARE THE PROPERTY OF XFCN AND SHALL NOT BE REPRODUCED, COPIED OR CUED IN ANY MANNER WITHOUT THE PRIOR WRITTEN CONSENT OF XFCN |        | APPD     | Chen ZhiQiang  |                             | VIEW  |  |      |     |
|                                                                                                                                                                |        | CHKD     | Liu Wei        |                             | SCALE | SHEET                                                                                 | REV  |     |
|                                                                                                                                                                |        | DRAW     | Chen HongJiang |                             | DATE  | 2024.05.18                                                                            | NONE | 1/1 |
|                                                                                                                                                                |        | DATE     | 2024.05.18     |                             | SCALE | NONE                                                                                  |      | 1/1 |
|                                                                                                                                                                |        |          |                |                             |       |                                                                                       |      | A1  |